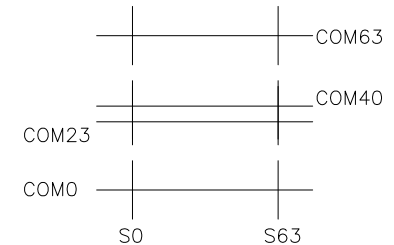


出货示意图

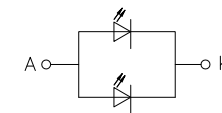
CN1 PIN DESCRIPTION	
PIN	SYMBOL
1	+
2	-
3	ON/OFF
4	GND

REMARK:  
CN2 PIN9~PIN12匹配CN1  
PIN1~PIN4一一对应, 无功能要求。

CN2 PIN DESCRIPTION	
PIN	SYMBOL
1	VDD
2	GND
3	SCK
4	SDA
5	CD
6	CS0
7	A
8	K
9	NC
10	NC
11	NC
12	NC



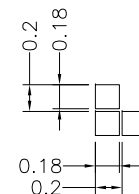
LCD LAYOUT



BACKLIGHT CIRCUIT DIAGRAM

NOTES:

1. DISPLAY TYPE: FFSTN NEGATIVE, TRANSMISSIVE.
2. VIEWING DIRECTION: 6:00 O'CLOCK.
3. OPERATING VOLTAGE: VDD=2.7~3.3V.
4. DRIVE METHOD: 1/48 DUTY.
5. DRIVER IC: UC1617S.
6. OPERATING TEMP.: -30°C ~ 80°C.
7. STORAGE TEMP.: -40°C ~ 85°C.
8. BACKLIGHT: WHITE LED, VLED=3.2V±0.2V, ILED=40mA.
9. INTERFACE: 4-WIRE SPI.
10. GENERAL TOLERANCE: ±0.2MM.
11. ROHS COMPLIANT.



DETAIL A  
SCALE 10:1

		MULTI-INNO TECHNOLOGY CO., LTD.			
		DRAWN BY: CAROL 2020.10.28 CHECKED BY: SCALE: 1/1 APPROVED BY: UNIT: mm SHEET NO.: 1/1	MODULE P/N: MI6448A-G DESCRIPTION: GRAPHIC MODULE		
02 CORRECT THE PIN 6 FROM CS1 TO CS0. MODIFY THE FPC LENGTH. MODIFY THE CN1 P/N. MODIFY BACKLIGHT VOLTAGE VALUE FROM 3.3V TO 3.2V±0.2V.	RITA 2021.01.26	01 FIRST ISSUE	CAROL 2020.10.28	VER. REVISED DESCRIPTION	REVISER DATE